



Sea Glimpse





# Sea Glimpse

Pymore Lane, Dottery, Bridport DT6 5PS

Bridport 2 Miles West Bay/Jurassic Coast 4 Miles

A charming attached cottage in a tucked away location with stunning country views over the Marshwood Vale.

- Stunning, Far Reaching Country Views
- Accommodation Over Three Floors
- Sun Lounge
- Sunny South Facing Garden
- Dating Back to Around 1750s
- Tucked Away Position
- Off Road Parking
- Two Bedrooms
- Freehold
- Council Tax Band C

Guide Price £365,000

## THE PROPERTY

Sea Glimpse is a charming 2 bedroom attached cottage with stunning views over the surrounding open fields and countryside from much of the accommodation. The property is believed to date back to around the 1750s and has been under the current ownership for over 30 years, and would now benefit from a degree of modernisation, offering plenty of opportunity for a new purchaser.

The accommodation currently comprises: entrance porch leading to a galley kitchen with built in cupboards and space for appliances and a pantry and store. The sitting room is of decent proportions being dual aspect and enjoying a feature fireplace with a woodburner, also with space for a dining area. To the rear of the sitting room is a very light and spacious conservatory overlooking the south facing garden with a utility and WC to the side.





Upstairs, a hallway with storage leads to a family bathroom with a shower cubicle and WC and views towards Salwayash. The main double bedroom has built in storage, views across the fields and towards the coast, taking in most of the local landmark hills and offering uninterrupted vistas. Further stairs lead to an attic room which is of generous proportions, currently housing four single beds with views over two aspects, one through Veluxes with views to the South.

## OUTSIDE

From the conservatory/sun room, there is a lovely paved terrace. A couple of steps lead to a level lawn which backs on to open farm land and enjoys uninterrupted vistas across the West Dorset rolling countryside, taking in many landmarks including Colmer's Hill and offering more than 180 degree views.

There is off road parking for 2 cars with a small garage and access up a few steps to a private patio area at the front of the house and a side gate to the rear garden.

NB: Despite the properties name, there are not any direct sea glimpses or views from the property or land, the countryside views are however exceptional.

## SITUATION

Sea Glimpse is pleasantly located in Dottery, surrounded by open countryside with 180 degree views over the Marshwood Vale. The immediate area is designated one of Outstanding Natural Beauty (AONB). Just 2 miles to the south is the thriving market town of Bridport, having a twice weekly market and offering a broad range of shopping, leisure and cultural experiences. The Jurassic Coast World Heritage Site at West Bay is also very nearby. The larger towns of Dorchester and Axminster are also within about 20-30 minutes' drive, both having main railway lines to London Waterloo.

## SERVICES

Electric heating. Mains water and drainage.

## VIEWINGS

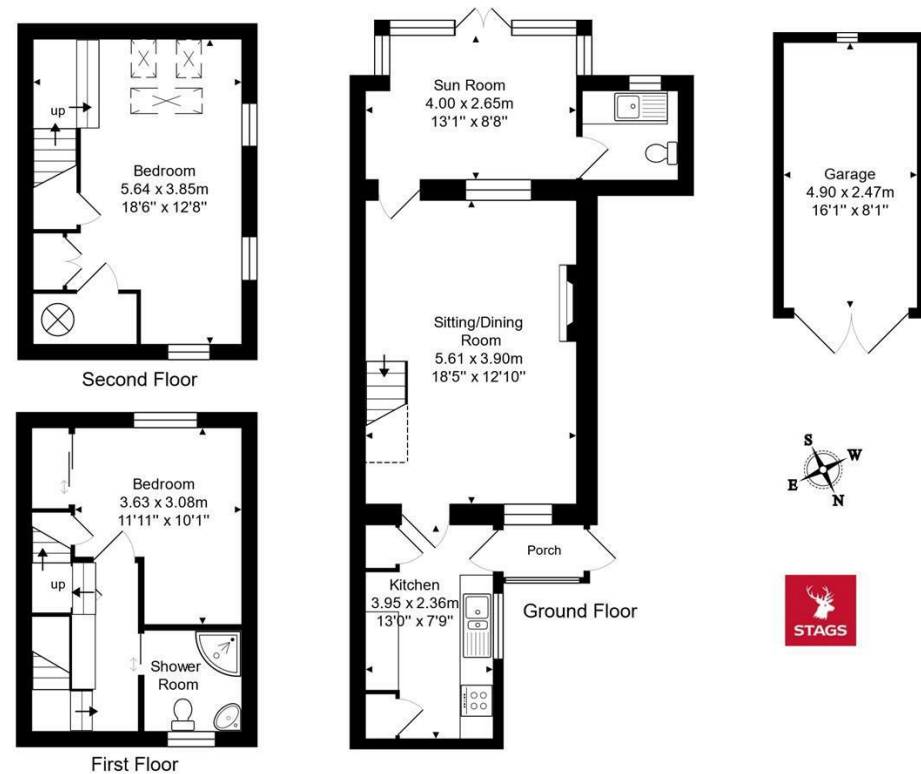
Strictly by appointment with Stags, Bridport.

## DIRECTIONS

From Bridport, follow West Street and turn right at the roundabout towards North Allington. Follow this road for about 1.5 miles and then turn right onto Pymore Lane. Sea Glimpse will be found on your right after just over 100 yards.







Total Area: 92.4 m<sup>2</sup> ... 995 ft<sup>2</sup> (excluding garage)  
 Not to scale. Measurements are approximate and for guidance only.



Energy Efficiency Rating		
	Current	Potential
Very energy efficient - lower running costs		
(92 plus) <b>A</b>		<b>82</b>
(81-91) <b>B</b>		
(69-80) <b>C</b>		
(55-68) <b>D</b>		
(39-54) <b>E</b>		
(21-38) <b>F</b>		<b>17</b>
(1-20) <b>G</b>		
Not energy efficient - higher running costs		
<b>England &amp; Wales</b>		EU Directive 2002/91/EC

32 South Street, Bridport, Dorset, DT6 3NQ

bridport@stags.co.uk

01308 428000



@StagsProperty

Cornwall | Devon | Somerset | Dorset | London